

ePOS

# ePOS TOUCH VISION 1553



## USER MANUAL

# Contents

---

<b>General Information .....</b>	<b>i</b>
ABOUT THIAS MANUAL.....	i
WARNING .....	i
WARRANTY LIMITS .....	i
TRADE MARKS AND SERVICE MARKS .....	ii
IMPORTANT SAFETY INFORMATION .....	ii
<b>1. Introduction .....</b>	<b>2</b>
1.1 Unpacking .....	2
1.2 Product Overview .....	3
1.3 I/O Ports and Connectors .....	5
1.4 Specifications .....	6
<b>2. Monitor Setting .....</b>	<b>7</b>
2.1 OSD Control Panel.....	7
2.2 On-Screen Display .....	8
<b>3. Peripherals &amp; Driver Installation .....</b>	<b>10</b>
3.1 Second Display .....	10
3.2 Pole-type Customer Display .....	11
3.3 Touch Screen Driver .....	12
<b>4. Peripherals Testing .....</b>	<b>16</b>
4.1 Magnetic Stripe Card Reader .....	16
4.2 Customer Display .....	17

# 1. Introduction

The PPD series offers high-quality, durable LCD touch screen that comes with a steady aluminum die-casting base and standard 75mm VESA mounting holes. The PPD is designed with the ability to integrate with any POS peripheral devices, such as speakers, rear top mount or pole type customer display, magnetic card reader, and second monitor.

## 1.1 Unpacking

The contents may vary with different options. If there's any physical damage or missing parts, please contact your supplier immediately. Please keep all packing materials in case you need to ship back the device for service.

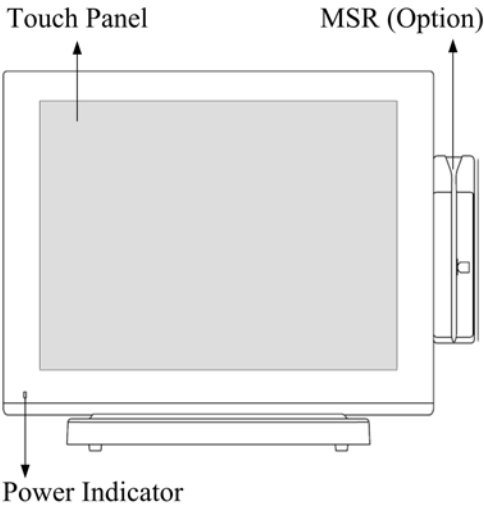
- POS Monitor 12.1"/15"/17" (For PPD-1210/1500/1700)
- Touch Cable (USB or RS-232 Interface)
- AC Power Cord (US, EU or UK)
- Support CD

### Options

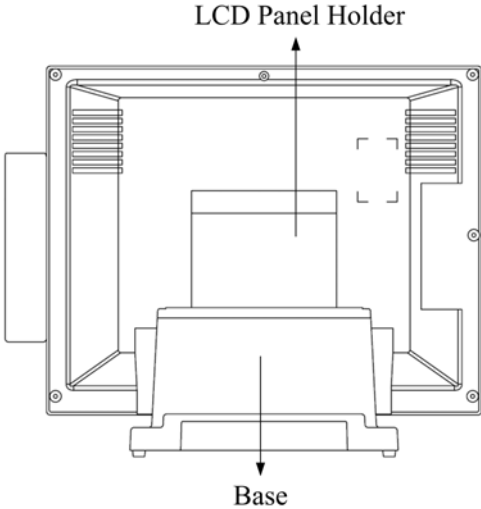
- Speakers (Pre-installed, Internal, 2W x 2)
- Magnetic Stripe Card Reader (PS2, USB, or RS-232 Interface)
- Second Monitor 10.4"/12.1"/15"
- Customer Display (Pole-type or Rear Top Mount)

### 1.2 Product Overview

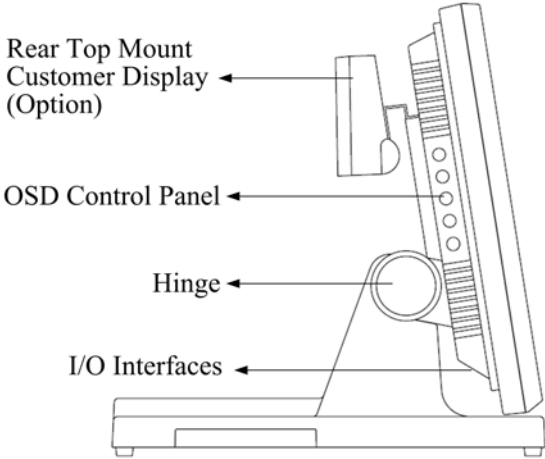
- Front View

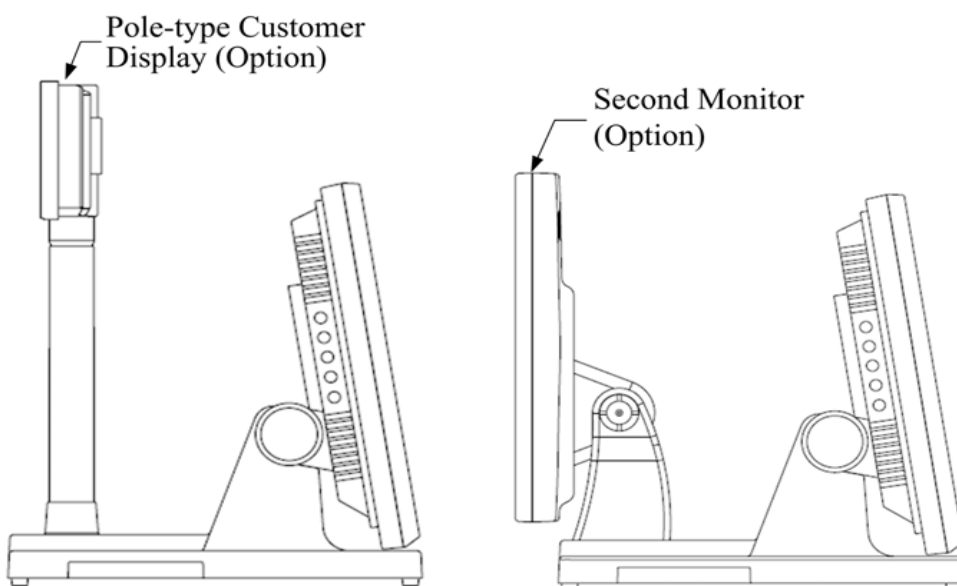


- Rear View

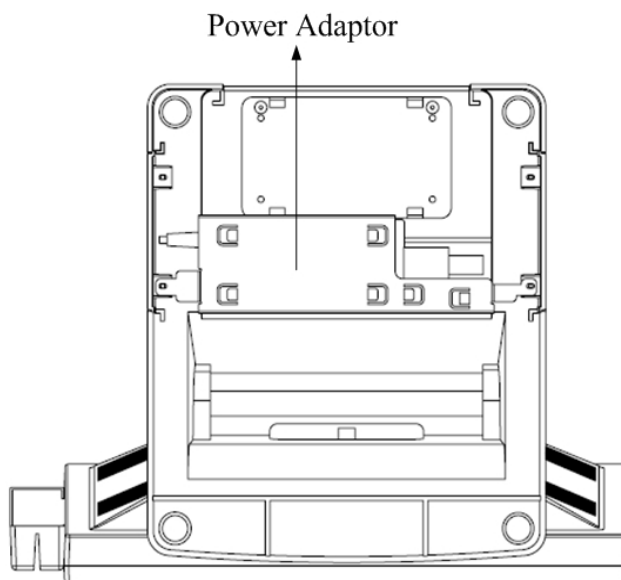


- Side View

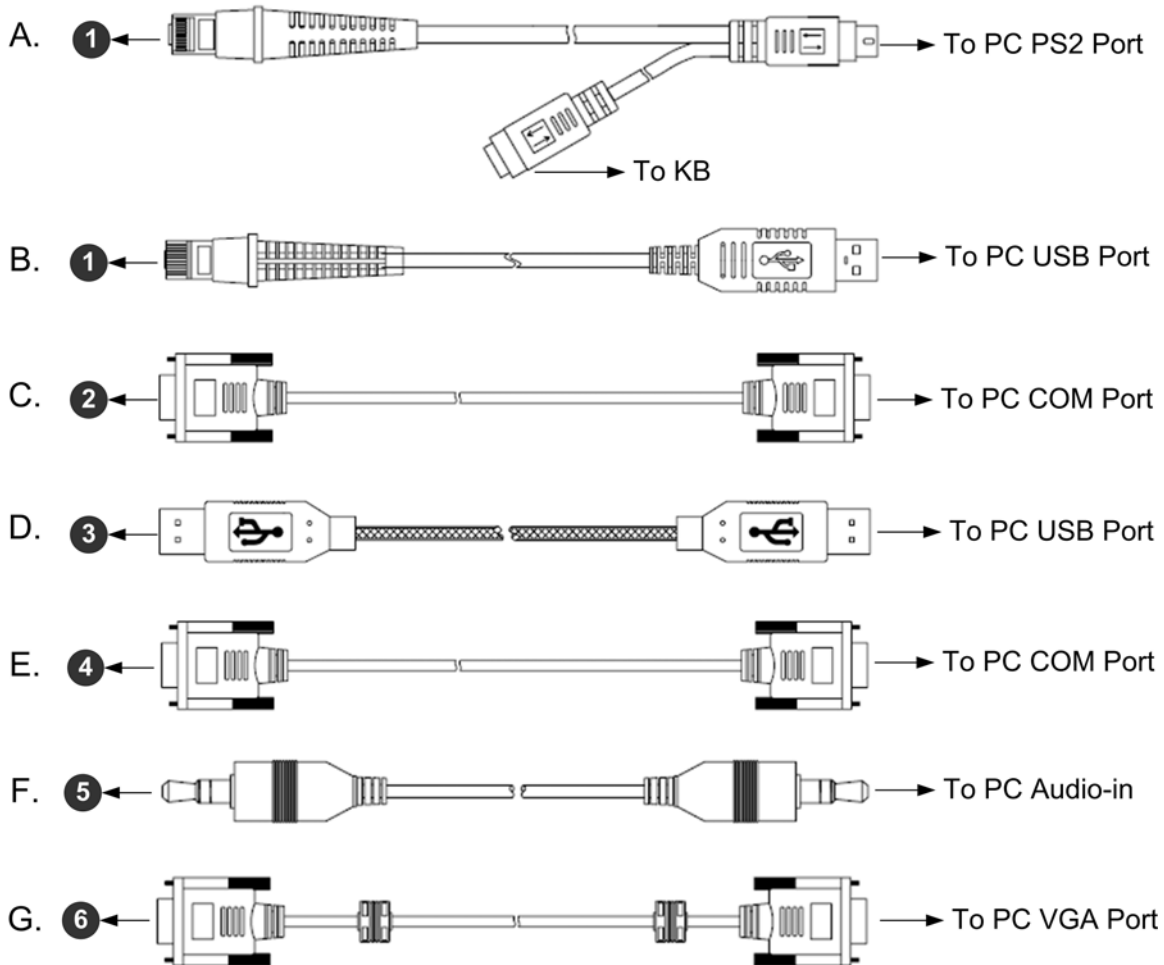
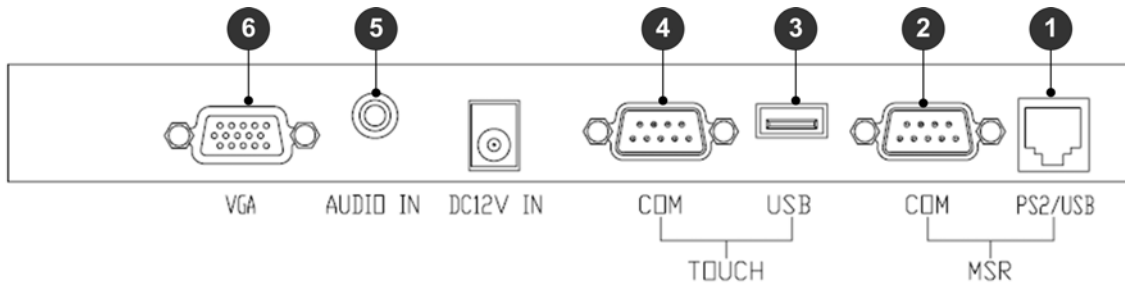




- **Bottom View**



## 1.3 I/O Ports and Connectors



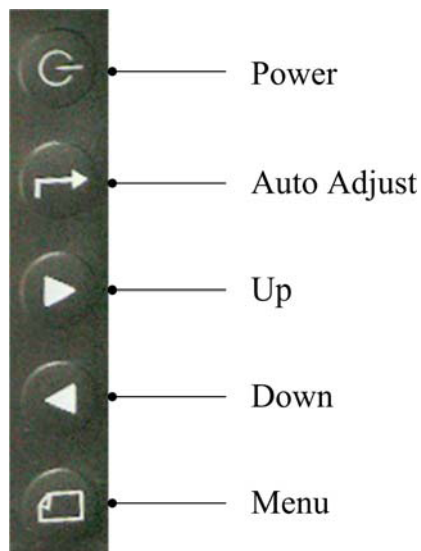
A.	PS/2 interface MSR cable
B.	USB interface MSR cable
C.	RS-232 interface MSR cable
D.	USB interface touch cable
E.	RS-232 interface touch cable
F.	Audio cable
G.	VGA cable

## 1.4 Specifications

<b>Display</b>			
<b>Model</b>	PPD-1700	PPD-1500	PPD-1210
<b>TFT LCD</b>	17"	15"	12.1"
<b>Brightness</b>	300 Nits	250 Nits	180 or 400 Nits
<b>Resolution</b>	1280 x 1024 Pixel	1024 x 768 Pixel	
<b>Touch Screen</b>	5 Wire Resistive Type, 25-Point Calibration		
<b>Tilting Angle</b>	15 ~ 80 Degrees		
<b>I/O Ports</b>			
<b>Serial</b>	RS-232 DB-9 x 2 (Optioned Touch x 1, MSR x1)		
<b>USB</b>	USB2.0 x 1 for Touch Panel		
<b>RJ 45</b>	PS2, or USB Optioned for MSR		
<b>VGA</b>	1 x DB-15, Female, Support up to XGA / SXGA at 75Hz		
<b>Audio In</b>	1 x Audio Jack with Internal Speaker 2W x 2		
<b>Others</b>			
<b>Option</b>	MSR, VFD, 2 <sup>nd</sup> Display, Speaker		
<b>VESA</b>	75mm		
<b>Power Input</b>	12VDC 48W	12VDC 24W	
<b>Color</b>	Black or Silver Optioned for Front Panel		
<b>Compliance</b>	FCC / CE / WEEE / RoHS		
<b>Weight</b>	6.4 Kg	5.4 Kg	5 Kg
<b>Dimension (W x H x D):</b>	416 x 370 x 330	356 x 340 x 305	305 x 320 x 305
<b>Operating Temperature</b>	5°C ~ 40°C		
<b>Storage Temperature</b>	-20°C ~ 60°C		
<b>Storage Humidity</b>	20% - 80% RH, Non-condensing		

## 2. Monitor Setting

### 2.1 OSD Control Panel



Button	Function
Power	Turn on/off the monitor
Auto Adjust	<ol style="list-style-type: none"> <li>Automatically optimize and adjust the screen settings.</li> <li>Exit the OSD menu.</li> </ol>
Up	<ol style="list-style-type: none"> <li>Increase the volumn.</li> <li>Increase the value of the function selected or move to the previous function as the OSD menu is active.</li> </ol>
Down	<ol style="list-style-type: none"> <li>Decrease the volumn.</li> <li>Decrease the value of the function selected or move to the next function.</li> </ol>
Menu	Activate the OSD menu and enter/select the function.



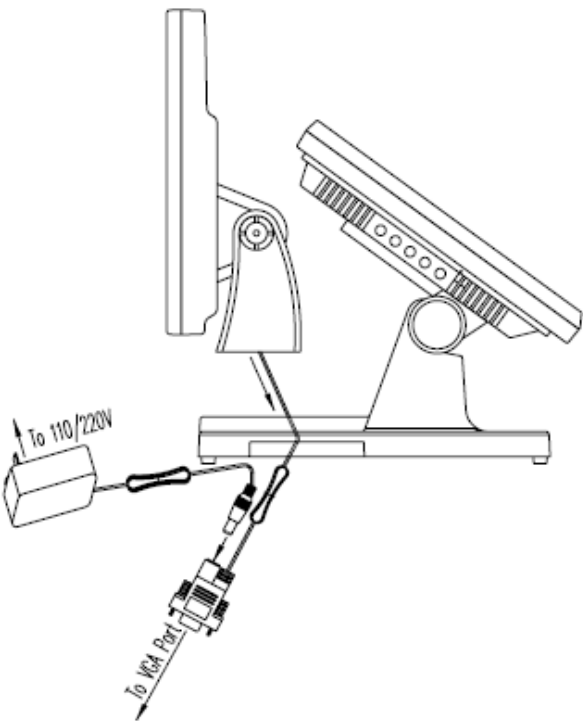
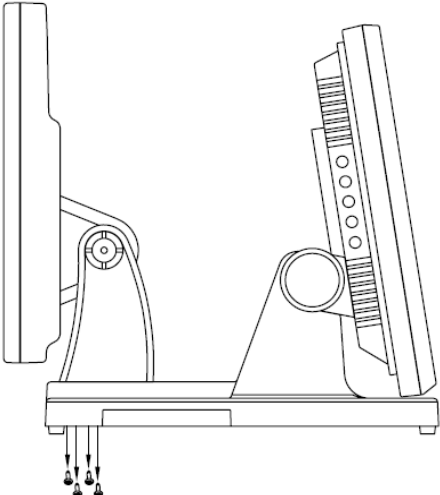
## 2.2 On-Screen Display

OSD Main Menu	Item	Description
Color	Contrast	Adjust the degree of difference between lightness and darkness.
	Brightness	Adjust the balance between lightness and darkness.
	Color Adjust	Set the value of red, green, and blue.
	Color Temp	Contain 5 color modes.
	Back	Go back to menu.
Image Setting	Clock	Adjust the pixel clock frequency.
	Phase	Adjust the pixel clock signal.
	Sharpness	Adjust the clarity and visibility of the edges.
	Back	Go back to menu.
Position	H.Position	Adjust the horizontal position of the screen image.
	V.Position	Adjust the vertical position of the screen image.
	Back	Go back to menu.
OSD Menu	OSD H.Pos	Adjust the horizontal position of the OSD menu.
	OSD V.Pos	Adjust the vertical position of the OSD menu.
	OSD Timer	Adjust the display time of the OSD menu.
	Back	Go back to menu.
Language	English	Set the OSD menu language to English.
	French	Set the OSD menu language to French.

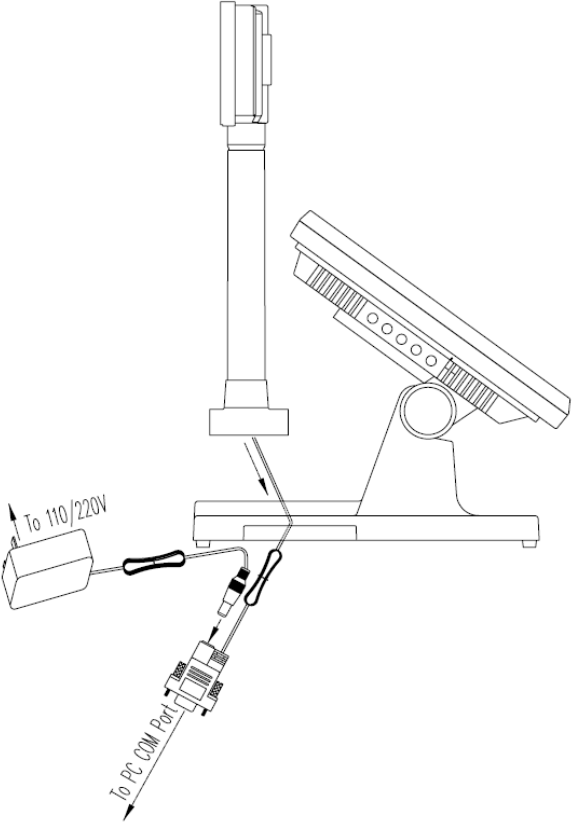
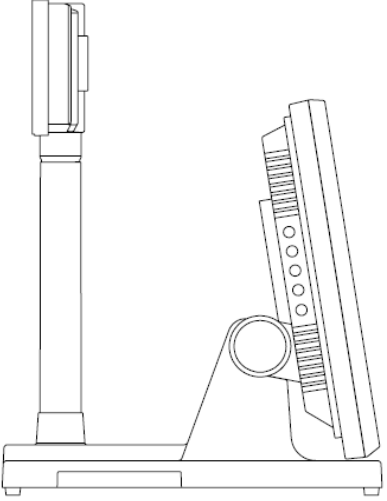
	Germany	Set the OSD menu language to Germany.
	Spanish	Set the OSD menu language to Spanish.
	Chinese Traditional	Set the OSD menu language to Chinese Traditional.
	Chinese Simple	Set the OSD menu language to Chinese Simple.
	Japanese	Set the OSD menu language to Japanese.
MISC.	Signal Source	D-SUB (analog) input only.
	Reset	Reset all settings to the default values.
	Back	Go back to menu.
Exit	Exit the menu.	

### 3. Peripherals & Driver Installation

#### 3.1 Second Display

	<p>a. Pass the cord through the hole. Plug the cable into the VGA port on a PC. Connect the extension power cord and plug the power adaptor to an AC outlet.</p>
	<p>b. Tighten the bundled screws specified for the stand of the second display to fix it to place.</p>

### 3.2 Pole-type Customer Display

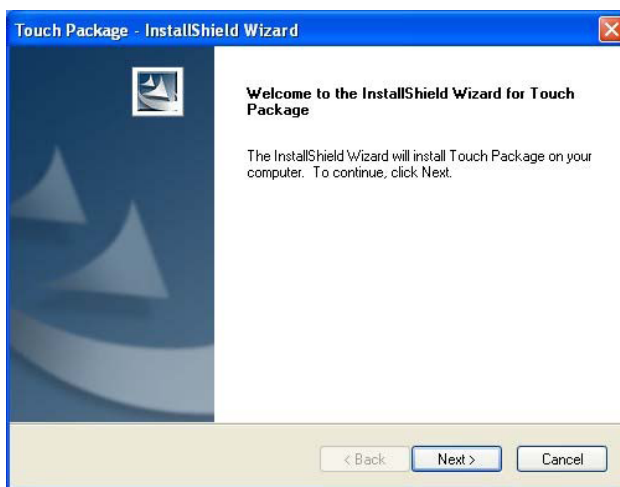
	<p>a. Pass the cord through the hole. Plug the cable into a free COM port on a PC. Connect the extension power cord and plug the power adaptor to an AC outlet.</p>
	<p>b. Press the stand of the customer display into place.</p>

**Note**

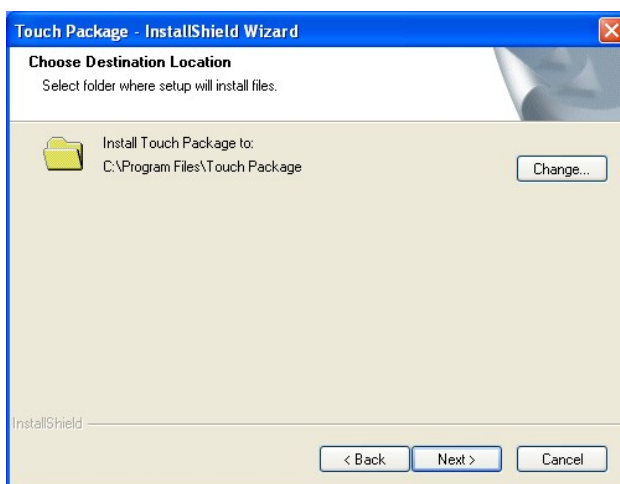
The rear top mount customer display is pre-installed in factory.

### 3.3 Touch Screen Driver

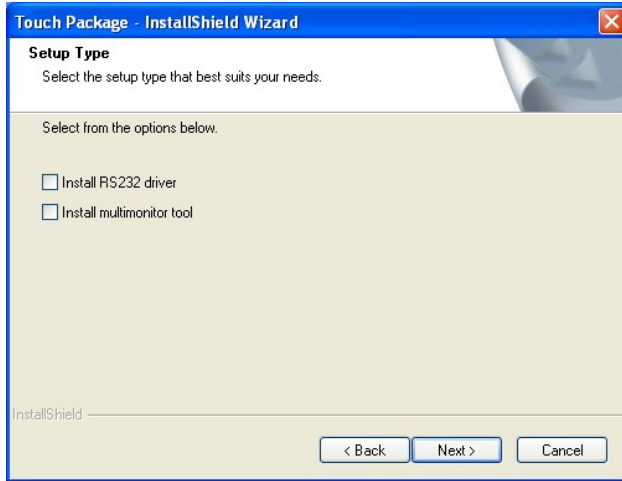
- a. Double click the folder “Touch” “5W Resistive” and then double click the subfolder according to the operating system.
- b. Double click the file “setup” to start the installation.
- c. Click “Next” on the welcome window.



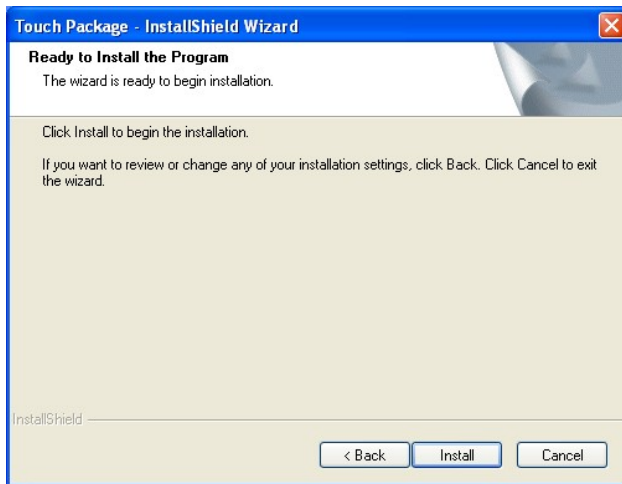
- d. Select the destination folder and click “Next.”



- e. Click “Next”.



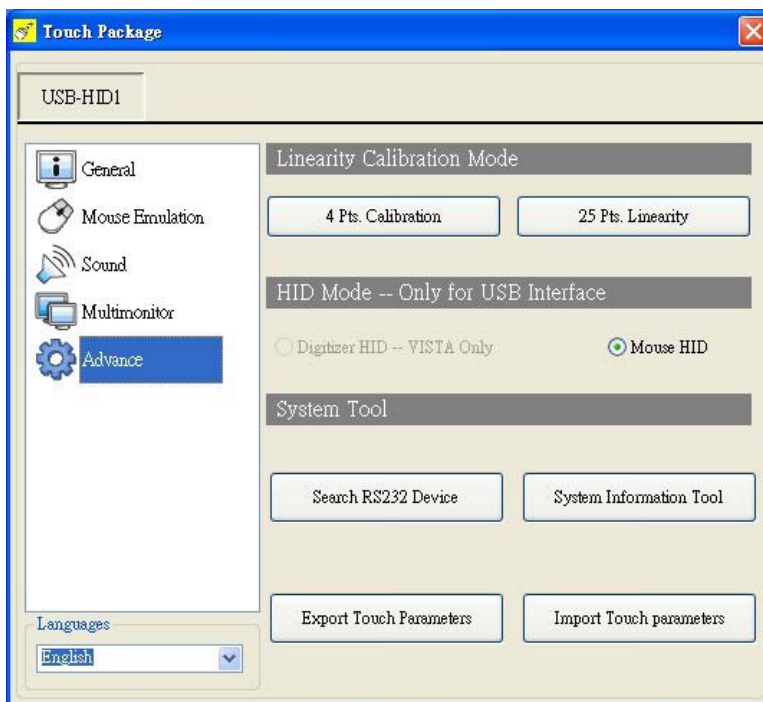
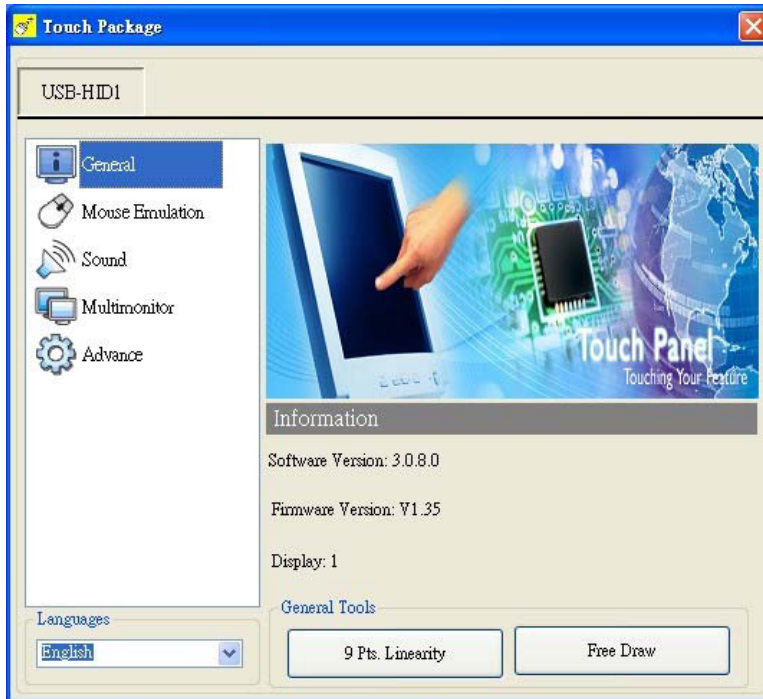
f. Click “Install” to start the installation.



g. Click “Finish” to exit the setup and restart the system.

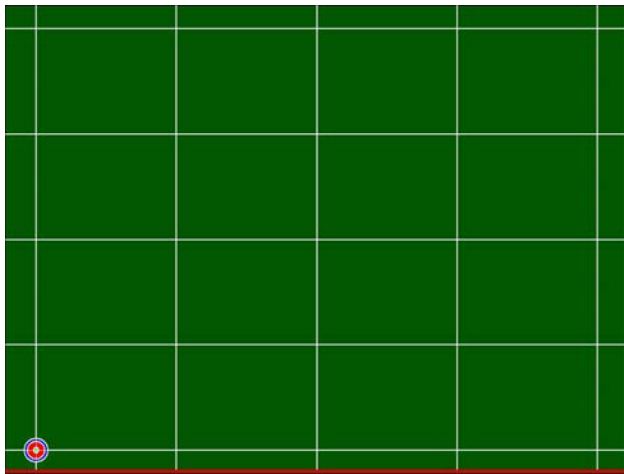


- h. Execute All Programs \ Touch Package \ Touch Tool. Select “General” and then click “9 Pts. Linearity” to start the 9-point-calibration. Or select “Advance” to select “4 Pts. calibration” or “25 Pts. Linearity”. The more points are calibrated, the more accurate the calibration will be.

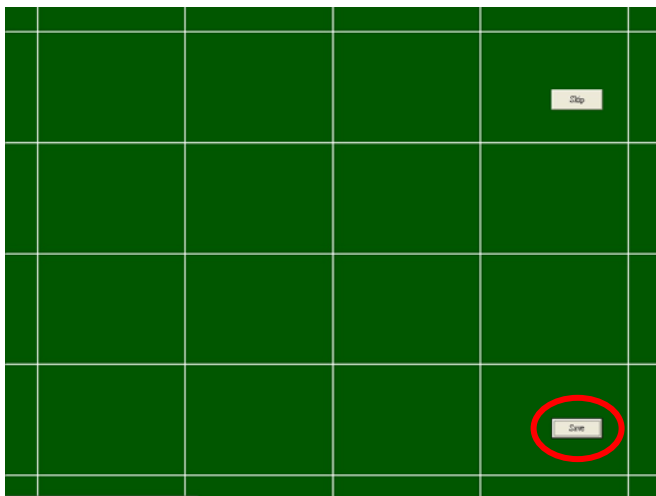


- i. Press the red dot on the screen with a finger till it disappears. The dot will appear 4/9/25

times in turn on the screen.



j. After the calibration is done, click the lower button to save it.

**Note**

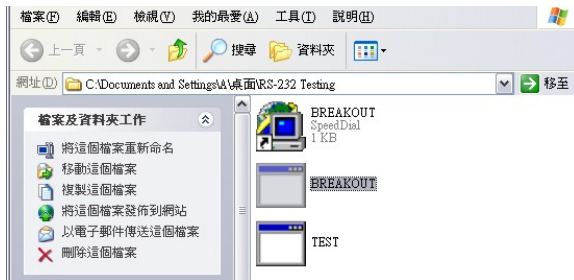
Refer to the file “Userguide2\_8” for more information on the setting of the touch package.





## 4.2 Customer Display

a. Open the folder “Peripherals” “Customer Display” and double click the file “BREAKOUT.exe”.



b. Enter any keys on the window and the typed words will appear on the customer display.

